



Safer Escape



Drive safe.

The all-new Ford Escape combines a body made from high-strength steel and a wealth of safety-related technologies to deliver peace of mind.

Clever engineering eliminates center bar

The available panorama Vista Roof™ eliminates the usual thick center bar, offering better sightlines for passengers while maintaining structural integrity. Ultra-high-strength steel rings the opening.



Crash tested

The all-new Ford Escape was crashed more than 5,000 times in virtual and real-world tests.

High-strength steel

A combination of steels provides a robust unibody construction. For the first time ultra-high-strength steel is added to the body. Nearly one-third of the steel in the body is composed of advanced high-strength and ultra-high-strength steel.

Advanced airbag technology

Side airbags deploy lower in the pelvis area in addition to the chest, and incorporate new venting technology. The class-exclusive adaptive vent in the side airbag takes into account the size of the occupant and varies the pressure so a smaller occupant gets a lower pressure.

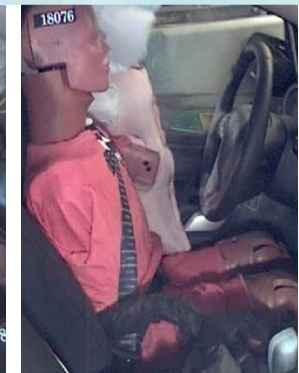
How it works: The adaptive vent is lined up with the shoulder area of the occupant. For larger passengers, the shoulder engages the vent and keeps it from venting so the gas stays inside the airbag. For smaller passengers, the effect is just the opposite: Because the shoulder is below the vent, the gas vents out of the airbag.



Adaptive vent at top left.



Adaptive vent blocked for larger occupant.



Adaptive vent remains open for smaller occupant.