



L I N C O L N

# Intelligent Access with Push-Button Start/Remote Start System

The 2011 Lincoln MKX luxury crossover adds both Intelligent Access with push-button start and Remote Start System as standard features. These convenience technologies allow customers one-touch entry and start and to warm up or cool off their cabins.



Customer approaches vehicle with Intelligent Access key

To enter, the customer approaches the vehicle with the Intelligent Access key in his or her possession. The customer pushes a button on the driver's door handle to wake the system, which then unlocks the driver's door.

To start the vehicle, the customer applies the brake pedal and presses the start/stop button on the instrument panel. The vehicle will start if the key is in the vehicle interior.

The Intelligent Access key can be kept in a pocket or briefcase. In the event of a radio frequency interference that may block the signal, there is a molded pocket to place the Intelligent Access key in order to start the vehicle.

A removable, mechanical key blade is inside the transmitter and can be accessed and used to unlock the driver's door.



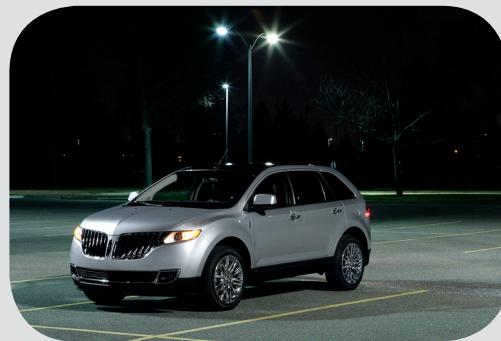
Engine start/stop button



Transmitter with removable mechanical key blade



## Remote Start System



The Remote Start System enables customers to start the vehicle from more than 300 feet away using a remote control device that also heats or cools the cabin.

To activate, the customer presses the lock button to lock all doors, then presses the remote start button twice. The system acknowledges by flashing the exterior lights twice.

After starting, the parking lights remain on and the engine can run for 10 minutes. (Customers can program the time for five, 10 or 15 minutes, as allowed by law.)

The duration can be extended with another remote start event, but no more than two are allowed within a one-hour period unless the key is transitioned in the ignition to run/start position.

While the engine is running, the climate control system, if in automatic mode, will automatically preheat or precool the vehicle based on both interior and exterior temperatures.

It can heat or cool the passenger compartment by boosting or lowering the blower motor speed, initiate front/rear window defrost, begin heating or cooling of the seat and initiate heating of the steering wheel, depending on the need.

## Availability

2011 Lincoln MKX, Ford Edge and Ford Edge Sport; coming to other 2011 model year vehicles this year.

