



1966 Fairlane



Symbol of
Fairlane's newness...
the unique
reversible key!

New dazzle! New go! *New Fairlane for '66!*

How much can a car change in just one year? You'll never know till you try a new Fairlane. Try out the interior for its new luxury, comfort and family-size room. Try it out on the road and experience a new smooth, quiet ride and a new kind of nimble handling that will *really* surprise you. And try the response of a full range of engines from a quick, thrifty 200-cu. in. Six to a 4-barrel Thunderbird Special 390-cu. in. V-8!

New Fairlanes come in a complete line of 13 models to suit the taste of every driver, every family. Smart, new bucket-seat hardtops and convertibles! Luxurious, roomy sedans! Brand-new GT and XL series! And three of the slickest wagons in their class! Standard features include many items not available on other cars at *any* price.

See how Fairlane measures up to everything you want in a car. Styling, ride, comfort, performance... *and price!* Try the Fairlane formula at your Ford Dealer's today!

5 SERIES, 13 MODELS

FAIRLANE GT & GTA: 2-Door Hardtops, Convertibles

FAIRLANE 500/XL: 2-Door Hardtop, Convertible

FAIRLANE 500: 2-Door Hardtop, Convertible,
Club Coupe, 4-Door Sedan

FAIRLANE: Club Coupe, 4-Door Sedan

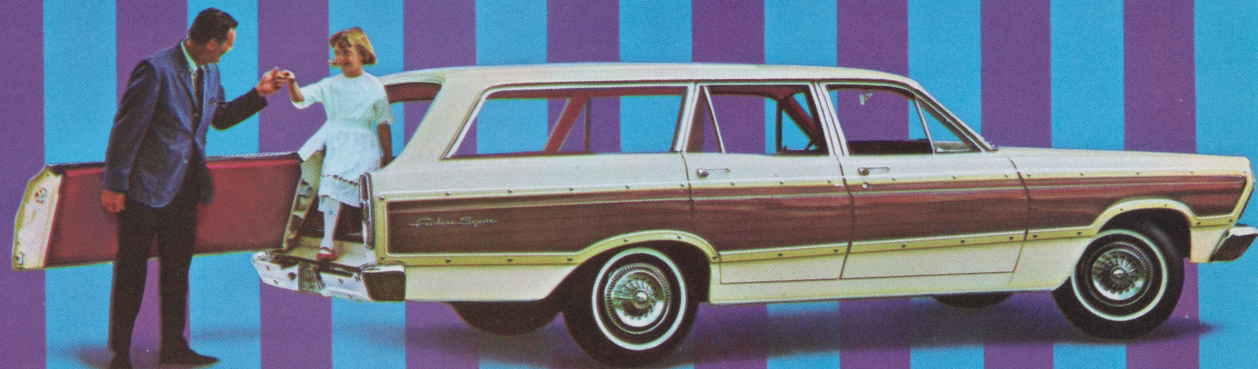
WAGON: Fairlane Squire, Fairlane 500, Fairlane



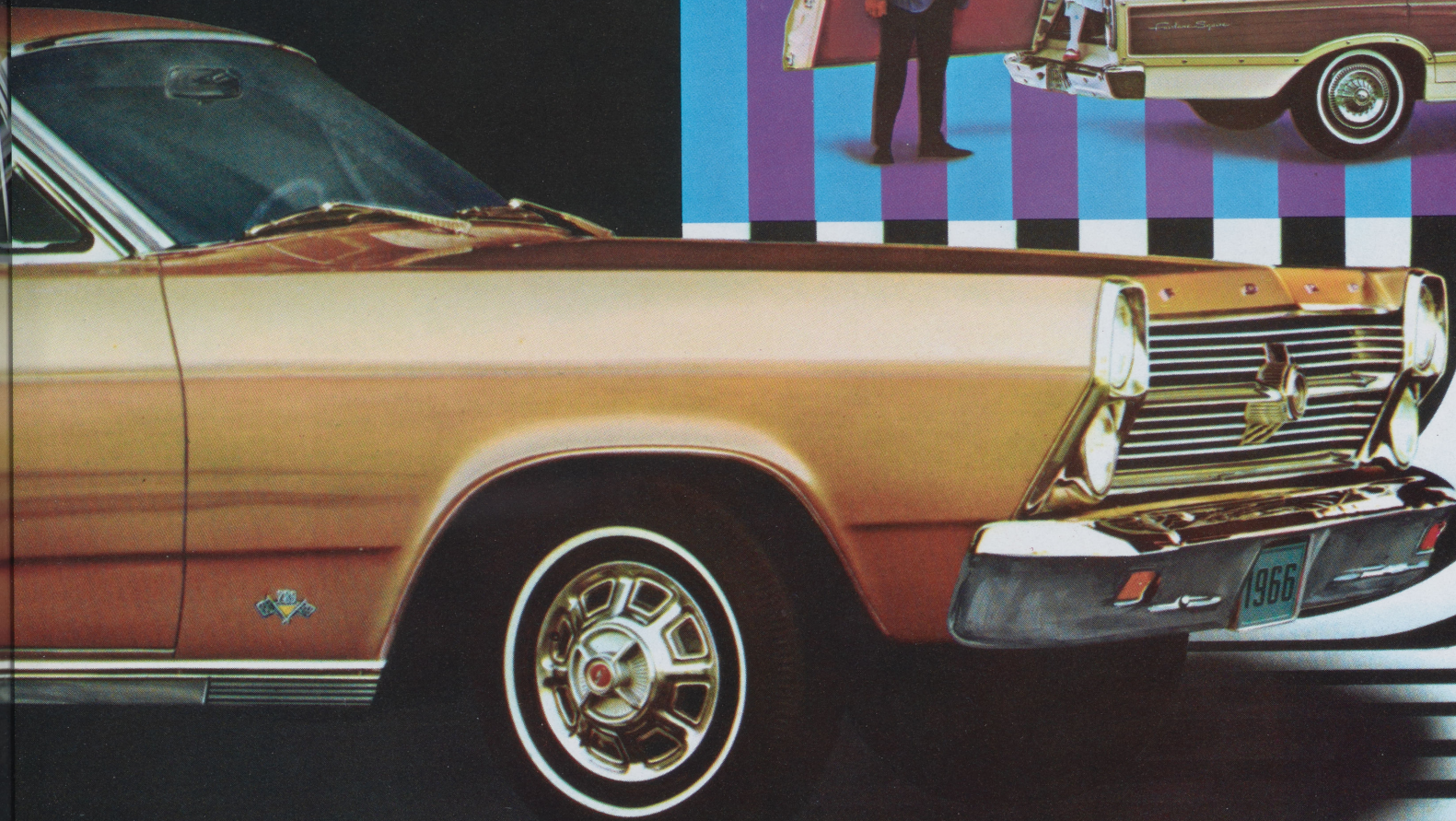
Fairlane 500/XL Hardtop



Fairlane 500 4-Door Sedan



Fairlane Squire Wagon



Fairlane GT and GTA

Bold GT stripes, "black-out" grilles and gleaming hood louvers are clues—these cars *go!* And no wonder! Standard engine on the new Fairlane GT and GTA is an exciting new 390-cu. in. 4-barrel V-8, the Thunderbird Special. This 335-hp mill will twist the tail of *any* tiger! High-lift cam, low-restriction air cleaner and bigger carburetor deliver "right now" performance. And it's only fitting that the 390 be decked out with chrome-plated rocker covers, oil filler cap, oil dip stick, radiator cap and air cleaner cover.

Standard gear box with the Fairlane GT is the console-shift Synchro-Smooth Drive 3-speed manual, *fully* synchronized in all forward gears. Optional is the 4-speed console-shift box.

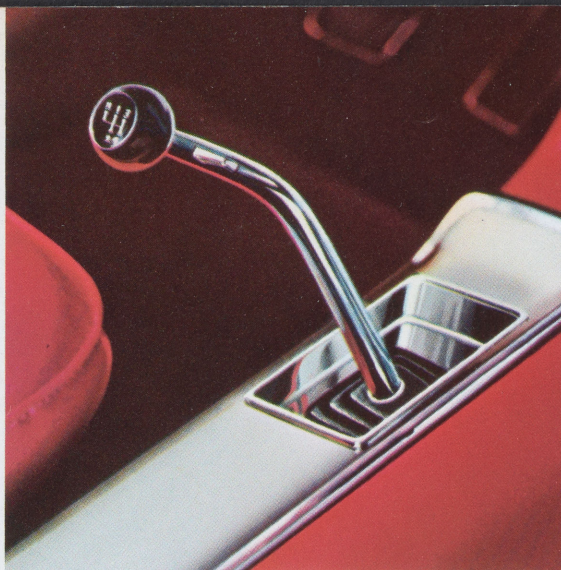
A great new performance option makes the GT a GTA. It's Fairlane's Sport Shift Cruise-O-Matic Drive. This remarkable automatic lets you shift *manually or automatically*, as you prefer. It's actually two transmissions in one . . . a manual for "him" and an automatic for "her" as explained at the right. The Sport Shift not only makes driving more fun, but it's a practical assist in hill climbing, braking and trailering.

For competition-type handling the GT and GTA feature stiffer springs and shocks, heavy-duty stabilizer bar, 7.75 nylon whitewall tires.

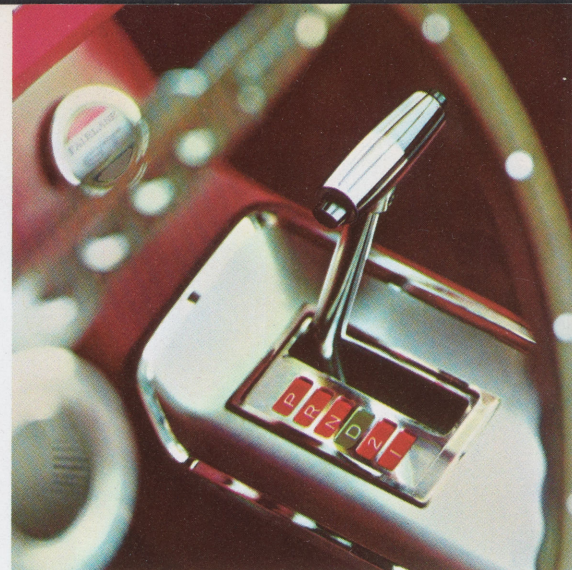
These new cars sport special GT and GTA identification and share luxurious interior appointments with the XL series described on page 6. Get hold of an exciting new Fairlane GT or GTA at your Ford Dealer's now.

STANDARD EQUIPMENT HIGHLIGHTS ■ 335-hp Thunderbird Special V-8 ■ Transmission: GTA, Sport Shift Cruise-O-Matic; GT, Synchro-Smooth Drive 3-Speed Manual Transmission ■ Bucket Seats and Console ■ Full Carpeting ■ 5-Ply Vinyl Convertible Top with Glass Rear Window ■ Padded Instrument Panel and Sun Visors ■ Front & Rear Seat Belts ■ Heater-Defroster* ■ Color and Upholstery Choices: 15 Colors of Super Diamond Lustre Enamel; 7 All-Vinyl Interior Trims ■ White Sidewall Tires ■ Wheel Covers ■ Suspended Accelerator Pedal ■ Backup Lights ■ Outside Rearview Mirror ■ Emergency Flasher. **POPULAR OPTIONS** (see also pages 14-15) ■ 4-Speed Manual Transmission ■ Push-Button Radio ■ Styled Steel Wheels ■ Sports Steering Wheel ■ Limited-Slip Differential ■ Power Convertible Top. **BASIC SPECIFICATIONS** ■ Length 197.0" ■ Width 74.7" ■ Wheelbase 116.0" ■ Weight (approx.) 3640 lb. (Convertible), 3475 lb. (Hardtop) ■ Trunk Volume 15.2 cu. ft.

*See "Prices" on back cover



If you want to do *all* your own shifting, the 4-speed is for you. Fairlane's optional 4-speed manual transmission (available with V-8's) is fully synchronized with higher numerical ratio in first gear. Gives fast takeoff from standing start. Floor-mounted shift lever has positive reverse-gear lockout.



Special with the Fairlane GTA is new Sport Shift Cruise-O-Matic Drive, which permits both manual and automatic shifting. For manual gear changing, move shift lever back to Low (1) and upshift through 2nd (2) and into High or Drive (D). For fully automatic shifting, simply move lever to Drive and go!

GT and GTA interior with luxurious vinyl bucket seats, console-mounted shift lever, paddle-type door handles integral with arm rests and optional sports steering wheel.





Fairlane GTA Hardtop



Fairlane GT Convertible

Fairlane 500/XL

Sporty looking? Sure! But that's not the half of it. The 500/XL's broad range of power teams lets you satisfy your personal flair for fun. Choose from four engines ranging from the standard 200-cu. in. Six to the big 390-cu. in. Thunderbird Special V-8. Then pick from the standard 3-speed manual transmission, optional 4-speed manual or 3-speed Cruise-O-Matic.

Fairlane has plenty of sports-car feel, too. New, wider tread (58"), 14-inch low-profile tires and redesigned front and rear suspensions give outstanding stability and control.

Fairlane 500/XL models come in a new Convertible and a 2-Door Hardtop with a sweeping fastback roofline. New, wider bucket seats give greater support and add a look of luxury. Bucket-styled rear seats and color-keyed sponge texture headlining give a new plush look. Controls for Cruise-O-Matic and 4-speed manual transmissions are console-mounted.

A complete list of options including a wood-toned sports steering wheel, styled steel wheels, tinted glass and dual headlight-to-taillight accent stripe lets you make the 500/XL as sporty as you want it.

Add to this Fairlane's deep-down quality and Ford's famous Service-Saving Features, and it's easy to see how you get real value in this one!

STANDARD EQUIPMENT HIGHLIGHTS ■ 120-hp Fairlane Six ■ 3-Speed Manual Transmission ■ Bucket Seats and Console ■ Full Carpeting ■ 5-Ply Vinyl Convertible Top with Glass Rear Window ■ Heater-Defroster* ■ Color and Upholstery Choices: 15 Colors of Super Diamond Lustre Enamel; 7 All-Vinyl Interior Trims ■ Wheel Covers ■ Suspended Accelerator Pedal ■ Padded Instrument Panel and Sun Visors ■ Front and Rear Seat Belts ■ Outside Rearview Mirror ■ Backup Lights ■ Emergency Flasher ■ Windshield Washers and Single-Speed Wipers ■ Ford's Twice-a-Year Maintenance Features (back cover).

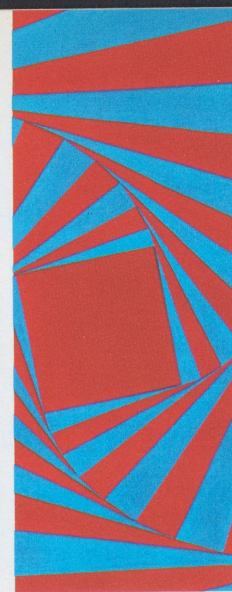
POPULAR OPTIONS (see also pages 14-15) ■ Choice of Three V-8's (200, 265 & 315 hp) ■ Cruise-O-Matic Drive ■ 4-Speed Manual Transmission ■ Push-Button Radio ■ Power Steering ■ Power Brakes ■ White Sidewall Tires ■ Dual Accent Paint Stripe ■ Power Convertible Top.

BASIC SPECIFICATIONS ■ Length 197.0" ■ Width 74.0" ■ Wheelbase 116.0" ■ Weight (approx.) 3110 lb. (Convertible), 2960 lb. (Hardtop) ■ Trunk Luggage Volume 15.2 cu. ft.

*See "Prices" on back cover

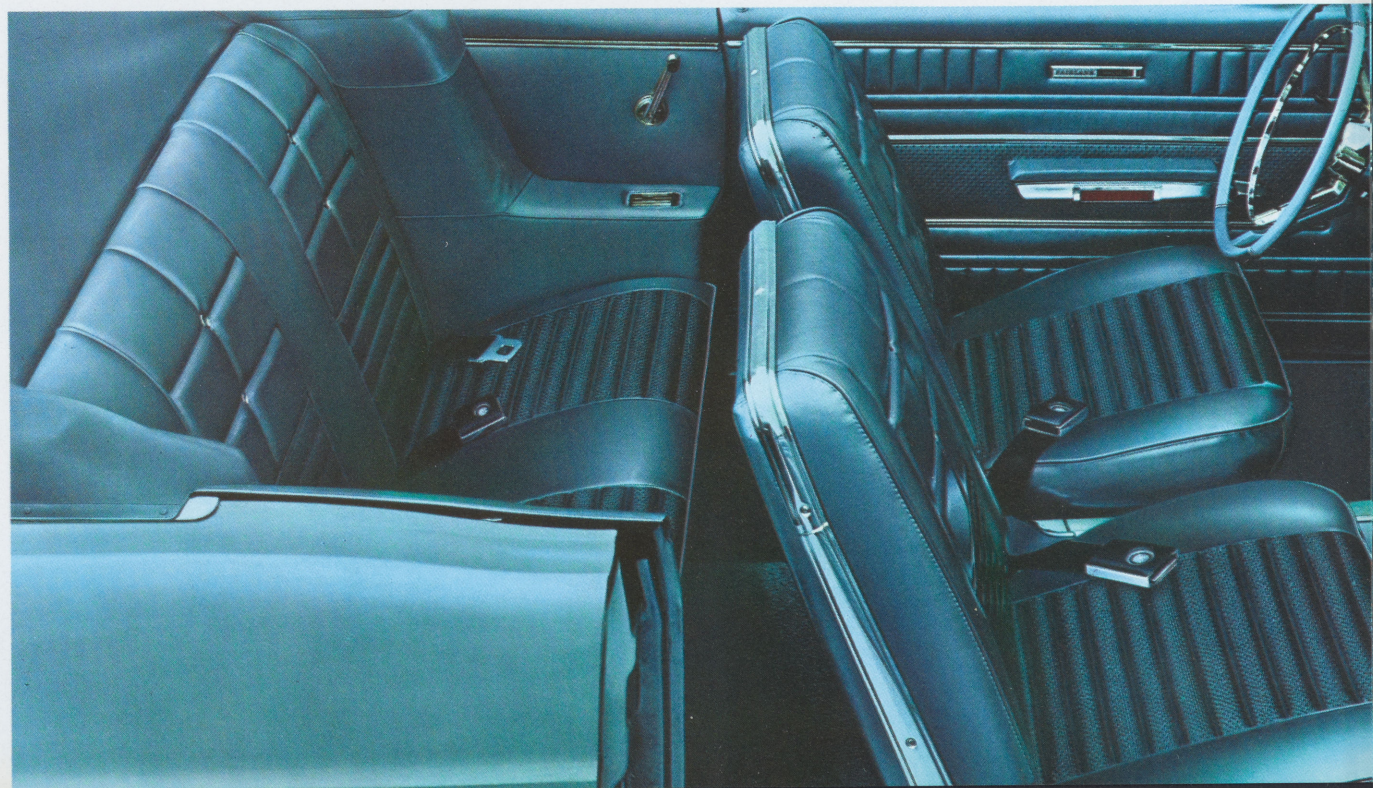


Combination safety (red) and courtesy (white) light mounted in front arm rests are standard on XL and GT models. Door panels are luxurious vinyl with bright trim moldings.



New convertible top is constructed of rugged 5-ply satin finish vinyl for durability. Glass rear window (standard) resists scratching, discoloring and can't wrinkle. Power top is optional.

Fairlane 500/XL interior features wider contoured bucket seats, all-vinyl trim, padded dash and sun visors and paddle-type door handles, all standard.

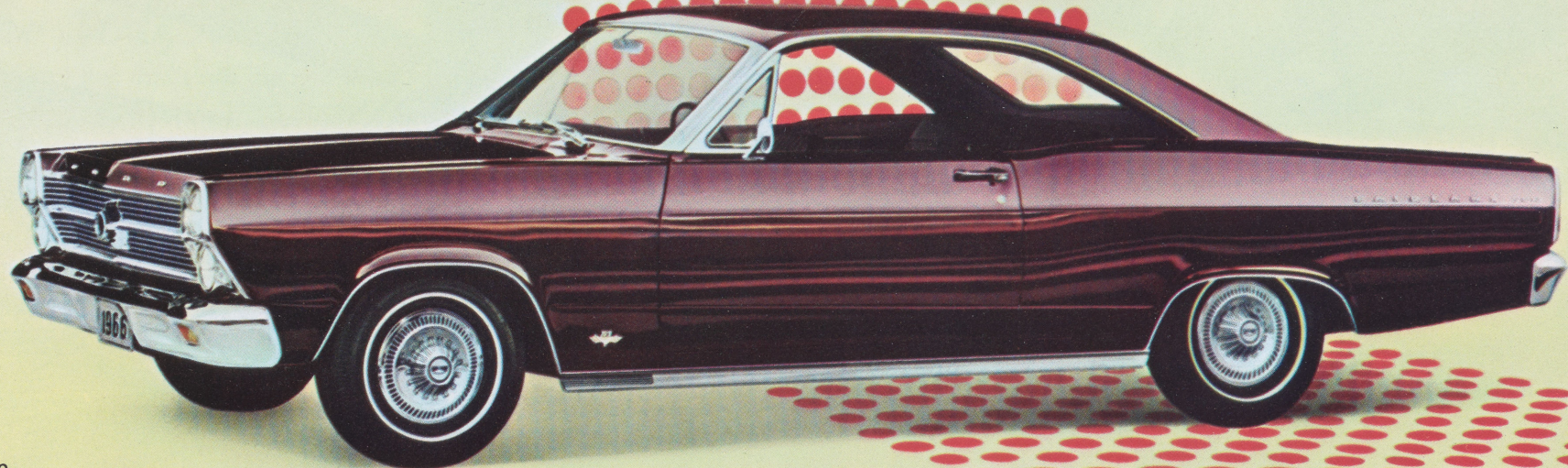




Fairlane 500/XL
Convertible



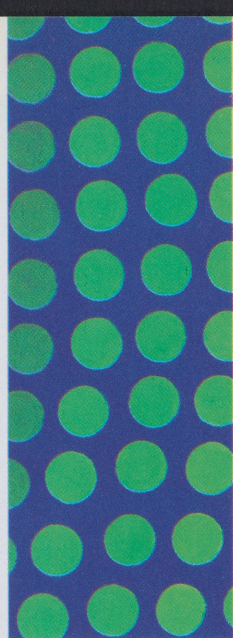
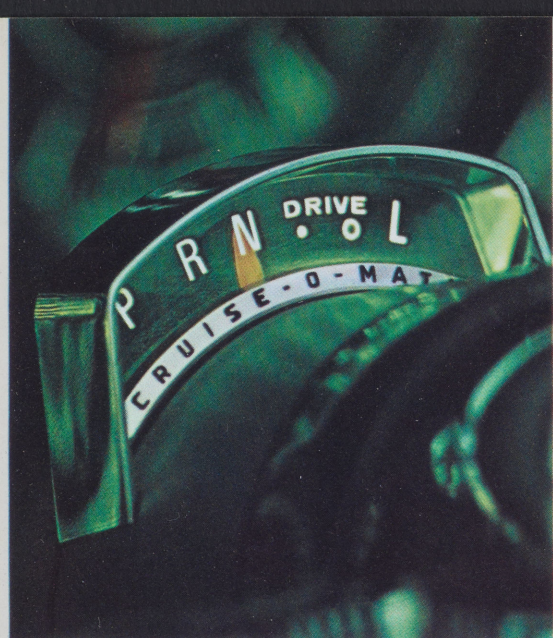
Fairlane 500/XL Hardtop



Fairlane 500 Hardtop



Fairlane 500 Convertible



For greater convenience at night, Fairlane's optional Cruise-O-Matic Drive features a lighted selector quadrant. In fact, all '66 Fairlane controls are lighted.

Vinyl convertible top boot, attractively color-keyed to the interior trim, snaps easily into place with concealed fasteners.

Fairlane 500 interior features vinyl door panels, pleated nylon and vinyl full-width seats, nylon-rayon loop pile carpeting, plus sponge-texture vinyl headlinings on hardtops, sedans and club coupes.



Fairlane 500

Fairlane for '66 is an appealing blend of youthful styling and meaningful luxury. And nowhere is this more apparent than in these new Fairlane 500's. Check the smooth lines of the smart new Convertible with its glass rear window that won't wrinkle or discolor. Or the sweeping roofline of the 2-Door Hardtop. And note that all Fairlanes have curved side glass, a feature that provides more room and comfort.

Fairlanes ride better this year than ever before. Improved coil-spring front suspension and longer, wider rear leaf springs provide a smooth, quiet ride with superb road handling characteristics. Manual steering ratio is increased for greater steering ease.

Inside, there's a new instrument panel with full padding as standard equipment. Highlights include front and rear seat belts, hot/cold warning light for engine temperature, reversible key and "keyless" door locking—all standard.

New window and door rubber seals lock out drafts and wind noise for greater passenger comfort. Cowl-top ventilation system has controls at instrument panel sides for greater convenience. New foot-operated parking brake and suspended accelerator pedal are added features.

The standard 200-cu. in. Fairlane Six is as smooth as it is thrifty. For more snap, there are three optional V-8's to choose from, including a 390-cu. in. 4-barrel Thunderbird Special. Test Fairlane's unique blend of total performance.

STANDARD EQUIPMENT HIGHLIGHTS ■ 120-hp Fairlane Six ■ 3-Speed Manual Transmission ■ Safety-Courtesy Lighting ■ Full Carpeting ■ 5-Ply Vinyl Convertible Top with Glass Rear Window ■ Full-Width Seats ■ Padded Instrument Panel and Sun Visors ■ Heater-Defroster* ■ Suspended Accelerator Pedal ■ Front and Rear Seat Belts ■ Color and Upholstery Choices: 15 Colors of Super Diamond Lustre Enamel; 5 Cloth & Vinyl (Hardtop), 7 All-Vinyl (Convertible) Trims ■ Outside Rearview Mirror ■ Backup Lights ■ Emergency Flasher ■ Windshield Washers and Single-Speed Wipers ■ Ford's Twice-a-Year Maintenance Features (back cover). **POPULAR OPTIONS** (see also pages 14-15) ■ Choice of Three V-8's (200, 265 & 315 hp) ■ Cruise-O-Matic Drive ■ Power Steering ■ Power Brakes ■ SelectAire Conditioner ■ Dual Accent Paint Stripe ■ Power Convertible Top. **BASIC SPECIFICATIONS** ■ Length 197.0" ■ Width 74.0" ■ Wheelbase 116.0" ■ Weight (approx.) 3090 lb. (Convertible), 2935 lb. (Hardtop) ■ Trunk Luggage Volume 15.2 cu. ft.

*See "Prices" on back cover

Fairlane 500

Family-size comfort and convenience in a fun-size car! That neatly describes the '66 Fairlane 500 Sedans and Club Coupes. You notice the difference when you slip through the big door openings. Inside, there's more hip and shoulder room—plenty of room for six adults. New seat designs provide extra comfort and back support. You'll also see many safety features including: padded instrument panel and sun visors, outside rearview mirror, backup lights, front and rear seat belts, emergency flasher and windshield washers, all standard.

Fairlane's a comfortable road car, too! The integral body-frame utilizes four underbody torque boxes to help isolate noise and vibration from the passenger compartment. Refined front and rear suspension combined with Fairlane's new wider tread provides outstanding stability and a smoother, more comfortable ride. And a more effective use of insulating materials blots out heat and road noise.

All-new heater design allows more passenger foot room. Improved air distribution provides "living room" comfort throughout the car in the coldest weather. Fairlane's new SelectAire Conditioner* is integrally mounted in the instrument panel and provides air-conditioning, heating and defrosting for year-round comfort.

Fairlane 500 4-Door Sedan and Club Coupe models feature the spirited 200-cu. in. Six as standard and there's a choice of three optional V-8's with power up to 315 hp. New room, comfort and a solid reputation for quality make Fairlane a *better* buy than ever.

**Optional*

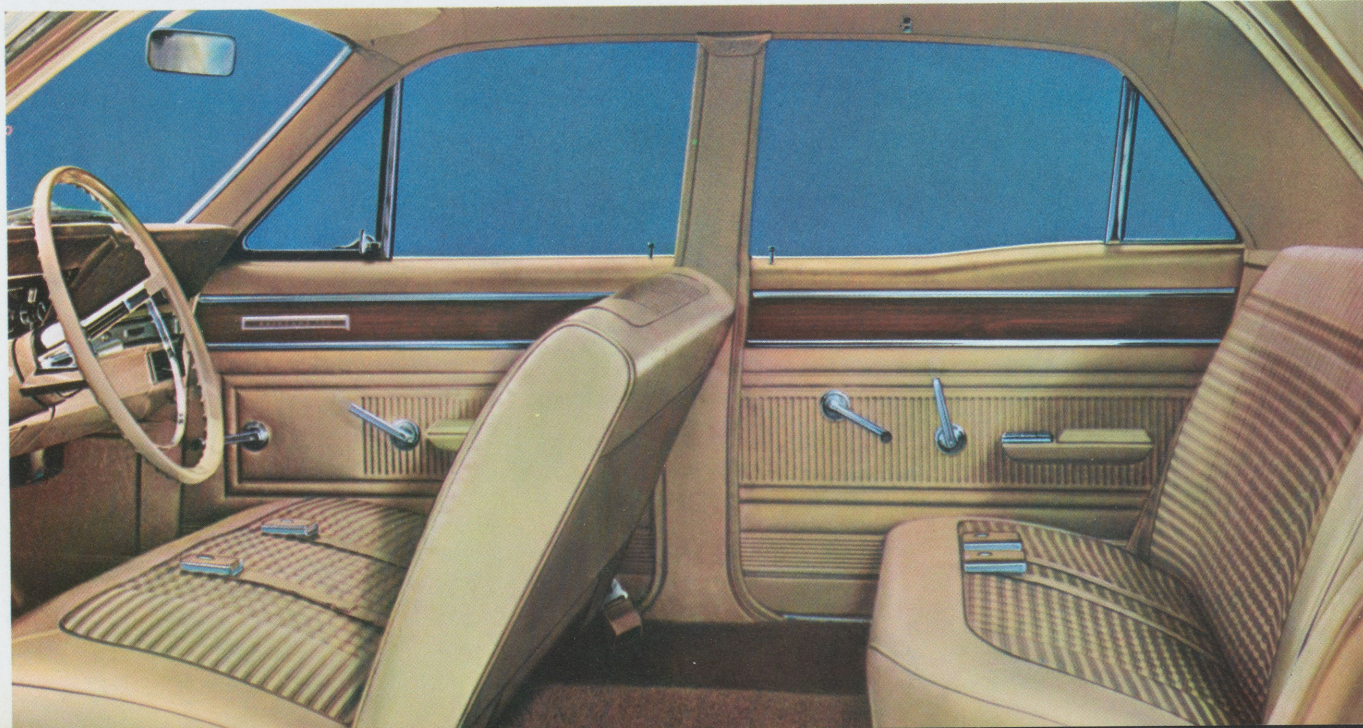
STANDARD EQUIPMENT HIGHLIGHTS ■ 120-hp Fairlane Six ■ 3-Speed Manual Transmission ■ Full Carpeting ■ Safety-Courtesy Lighting ■ Front and Rear Seat Belts ■ Heater-Defroster* ■ Padded Instrument Panel and Sun Visors ■ Electric Windshield Wipers and Washers ■ Color and Upholstery Choices: 15 Colors of Super-Diamond Lustre Enamel; 5 Cloth & Vinyl Trims ■ Outside Rearview Mirror ■ Backup Lights ■ Emergency Flasher ■ Suspended Accelerator Pedal ■ 14-Inch Low-Profile Tires. **POPULAR OPTIONS** (see also pages 14-15) ■ Choice of Three V-8's (200, 265 & 315 hp) ■ Cruise-O-Matic Drive ■ Power Steering ■ Power Brakes ■ All-Vinyl Trim ■ Push-Button Radio ■ Deluxe Wheel Covers ■ White Sidewall Tires. **BASIC SPECIFICATIONS** ■ Length 197.0" ■ Width 74.0" ■ Wheelbase 116.0" ■ Weight (approx.) 2933 lb. (4-Door), 2888 lb. (Club Coupe) ■ Trunk Volume 15.2 cu. ft.

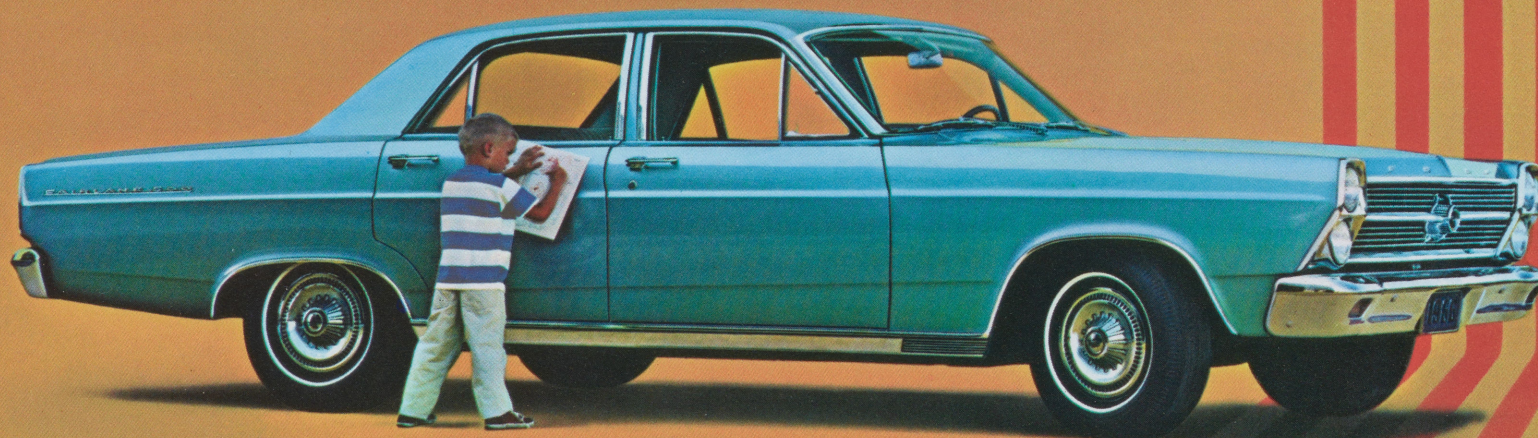
**See "Prices" on back cover*



Big Fairlane trunk has 15 cubic feet of usable luggage space. Sill is lowered to bumper level for easier loading and unloading.

Fairlane 500 sedan interiors are as comfortable as they are stylish. Choose from five attractive nylon and vinyl or seven optional all-vinyl color schemes.





Fairlane 500 4-Door Sedan



Fairlane 500 Club Coupe

Fairlane

Any way you look at them, new Fairlane 4-Door Sedans and Club Coupes just have to be among the year's top values. Take styling. It's all new with smooth, clean body lines, curved side glass and bold, new grille. Fairlane is roomier than ever with a wider passenger compartment and more trunk space. Rides smoother, quieter and handles better, too.

When it comes to economy, Fairlanes show other cars how. The standard 200-cu. in. Six goes *real easy* on gas. And the famous Ford Twice-a-Year Maintenance, battery-saving alternator, self-adjusting brakes and other service-savers stretch your driving dollars.

Fairlane's built better, too. Safety-Yoke door latches are huskier than ever. New door and window seals keep the passenger compartment snug in all weather. New Super Diamond Lustre Enamel adds a new look of quality . . . *never* needs waxing.

Styling, comfort, ride, economy! Whatever angle you look from, Fairlane spells value . . . in CAPITAL letters. See and drive a '66 Fairlane Club Coupe or 4-Door Sedan!



There's attractive color-keyed interiors, comfortable seating and plenty of room in every Fairlane.

Fairlane Wagons

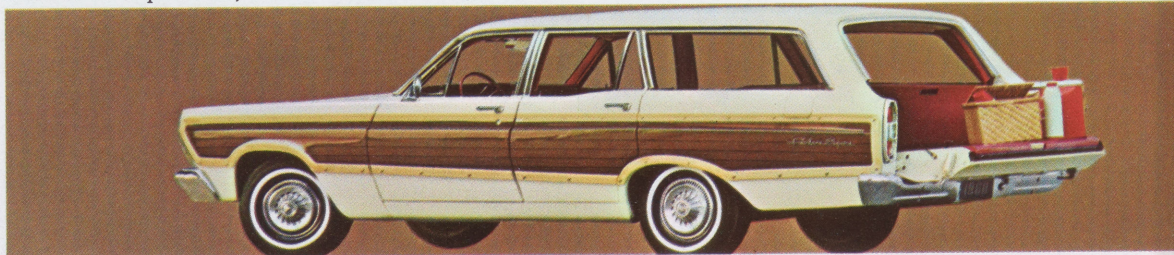
The three new Fairlane wagons are more beautiful, more versatile than ever. All-new Fairlane styling and richly appointed all-vinyl interiors make these wagons equally at home in the field or at the club. Simply fold down the second seat—a one-hand operation—and you have 93.4 cu. ft. of loadspace (including 8.2 cu. ft. in the below-floor stowage compartment).

All three—Fairlane Squire (shown here and on page 3), Fairlane 500 Wagon (far right) and the Fairlane Wagon—carry six passengers with plenty of extra room for cargo. An optional third seat boosts seating capacity to eight. And Fairlane wagons have a new, wider tailgate opening for easier loading.

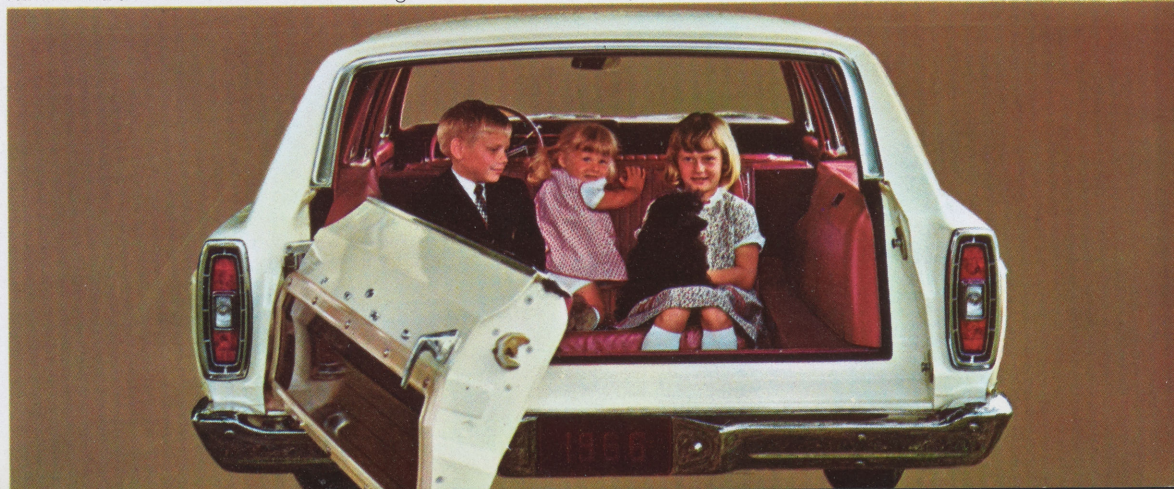
Big news for '66 is Fairlane's Magic Doorgate. It swings down like a regular tailgate (top right) or opens like a door (bottom right). Makes Fairlane wagons easier to load and step into. It's all as simple as turning a handle! And it's standard on all Fairlane wagons.

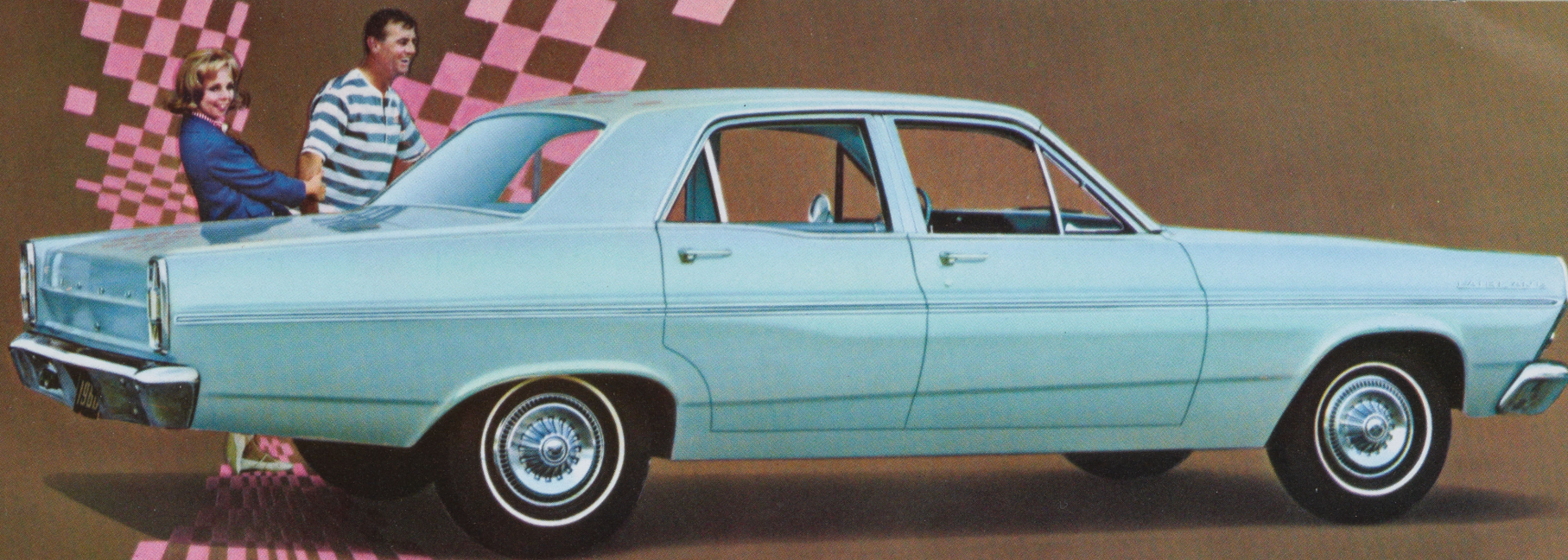
Fairlane wagons come with a 120-hp Six and 3-speed manual transmission. V-8 power (up to 315 hp), Cruise-O-Matic Drive, extra-economical Overdrive are options. Get all the information in the 1966 Ford Wagons catalog. Ask your Ford Dealer for *your* copy today.

NOW IT'S A TAILGATE! When you want an extension of the cargo floor to serve as a platform, Ford's standard Magic Doorgate lowers into place.



NOW IT'S A DOOR! Ford's new Magic Doorgate is a door *and* a tailgate combined. Turn the handle and it swings aside for easier entry and close-up loading.

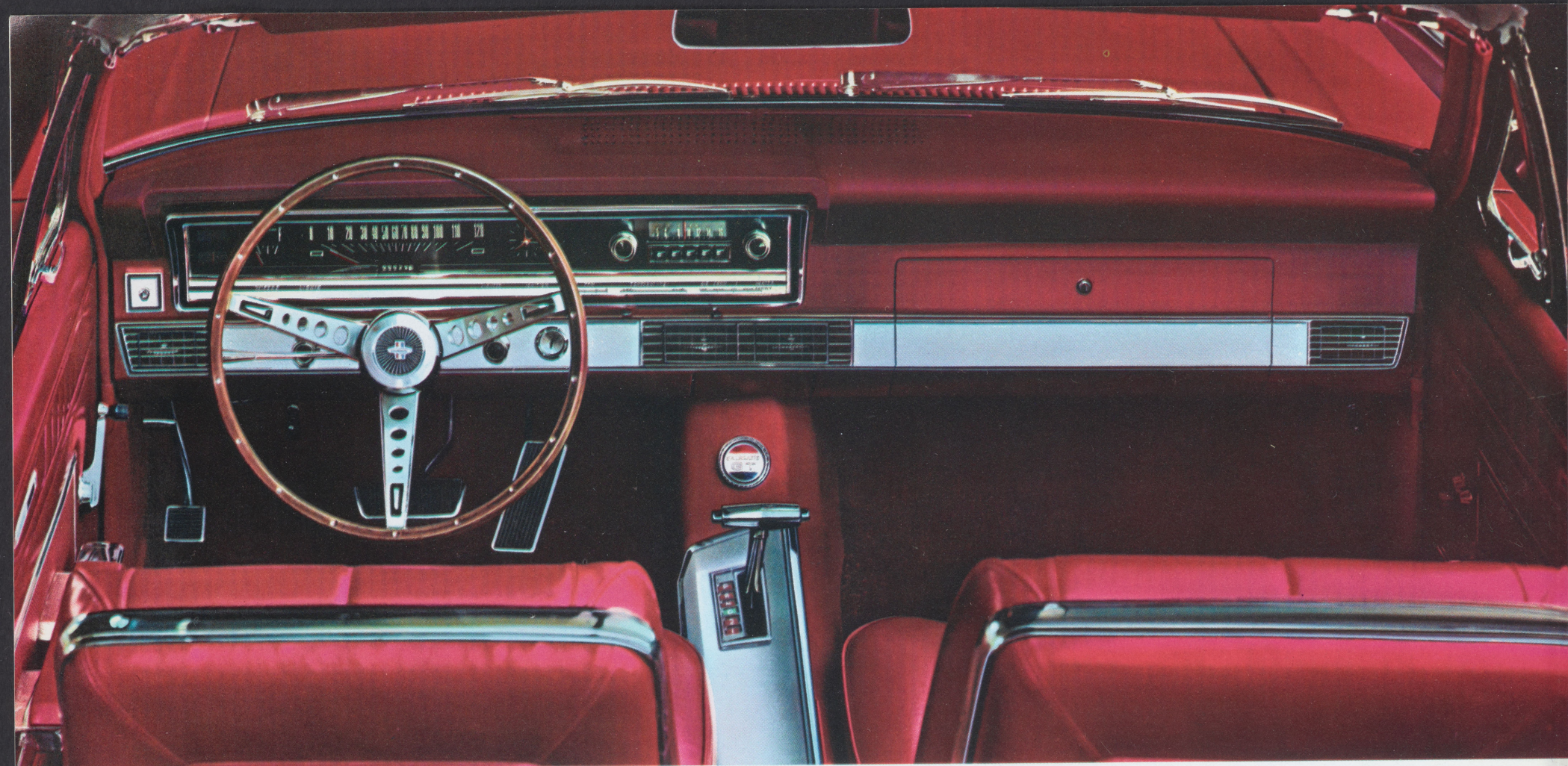




Fairlane 4-Door Sedan, also available in Club Coupe model



Fairlane 500 Wagon, one of three new '66 Fairlane wagons



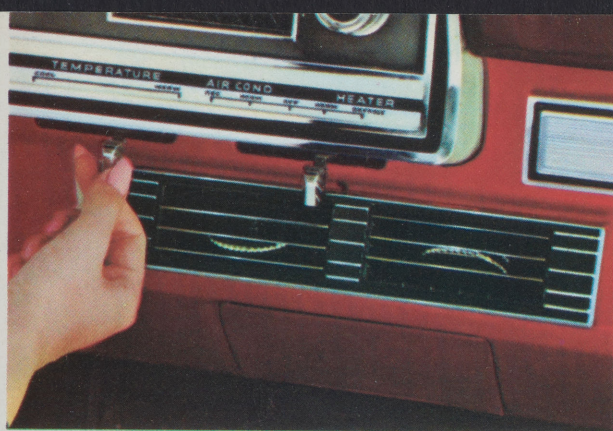
NEW FAIRLANE INSTRUMENT PANEL conveniently groups instruments, optional radio and SelectAire Conditioner controls for easy viewing and operation. Full padding is standard for safety and style.



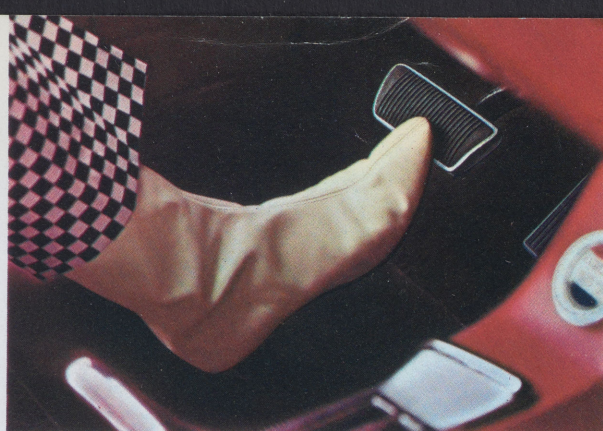
Fairlane options and accessories

The complete line of options listed on these pages lets you order your Fairlane as a performance car, luxury car, family car or a happy combination of all three . . . whatever you prefer. Some of the more popular options are shown in the illustration above. **POWER STEERING:** Hydraulic assist cuts effort 85%. Makes turning easier, more precise. **SELECTAIRE CONDITIONER** (see page 15): Controls and outlets are integral with the instrument panel. **CRUISE-O-MATIC DRIVE:** Smooth 3-speed automatic has

two driving ranges, lighted selector quadrant. GTA's feature new Sport Shift shown above. **AM RADIO:** Full transistor-powered for immediate warm-up, greater durability. Five station-selector push buttons. **ELECTRIC CLOCK:** Self-regulating with sweep-second hand. Illuminated at night. **SPORTS STEERING WHEEL:** Wood-toned rim with sporty perforated metal spokes. Horn buttons at outer ends of spokes. **POWER CONVERTIBLE TOP:** Raises and lowers easily with a touch of the panel-mounted control.



SELECTAIRE CONDITIONER: Air-conditioning, heating, defrosting are conveniently operated through a single control. Reheat feature removes moisture while cooling air.



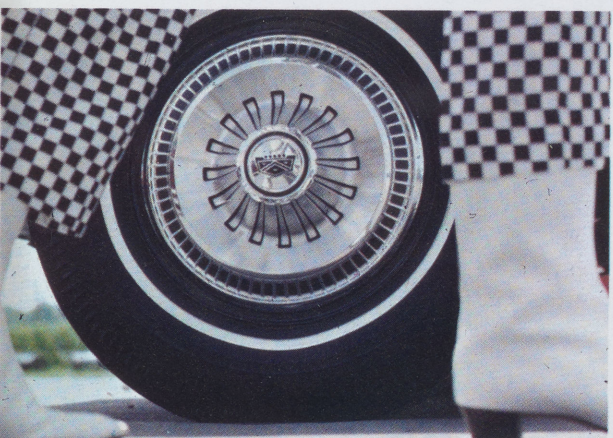
POWER BRAKES: Vacuum-assisted hydraulic type. Cut braking effort by 55%. Wide, low pedal with short travel affords fast braking response for greater safety.



VISIBILITY GROUP: Includes remote-control outside rearview mirror, day/night interior rearview mirror and 2-speed electric windshield wipers.



DELUXE SEAT BELTS: Automatic retractor reels outside front belts in to seat side. Seat belt reminder light flashes red on instrument panel.



DELUXE WHEEL COVERS: Bright-finished, good-looking and distinctive. Complement Fairlane styling, smartly accent new modern, narrow-band whitewall tires.



STYLED STEEL WHEELS: Bright-finished in bold, sporty design to give a real look of performance and excitement to all Fairlanes. Use them with or without whitewalls.

***Design your
Fairlane
to reflect your
personality.
Choose from this
full list of options.***

● 289-cu. in. Challenger V-8 ● 390-cu. in. Thunderbird V-8 ● 390-cu. in. Thunderbird Special V-8 ● 3-Speed Cruise-O-Matic Drive ● 4-Speed Manual Transmission (V-8's) ● Overdrive (289-cu. in. V-8) ● Power Steering ● Power Brakes ● SelectAire Conditioner ● Push-Button AM Radio ● Power Rear Window (Wagons) ● Deluxe Seat Belts, Front and Rear ● Visibility Group—includes remote-control rearview mirror, day/night rearview mirror, 2-speed electric wipers ● Electric Clock ● Tinted Windshield ● Tinted Glass All-Around ● Courtesy Light Group—includes lights for instrument panel ash tray and glove box, trunk, map light, front and rear door courtesy light switches ● Power Convertible Top ● Two-Tone Paint ● Dual Accent Paint Stripe (Fairlane 500 and 500/XL models)—shown on page 8 ● White Sidewall Tires ● Sports Steering Wheel ● All-Vinyl Trim (Fairlane 500 Hardtop and Sedans) ● Deluxe Wheel Covers ● Heavy-Duty Battery ● Limited-Slip Differential ● Removable Luggage Rack (Sedans) ● Chrome Luggage Rack (Wagons) ● Rear-Facing Third Seat (Wagons) ● *Heater-Defroster. And . . . many more. See your Ford Dealer.

**See "Prices" on back cover*



1966 Fairlane Specifications*

COLOR AND UPHOLSTERY SELECTIONS: Pick your favorite color from 15 brilliant Super Diamond Lustre Enamel single tones, or 23 two-tone combinations. You have a total of 30 Fairlane upholstery choices of rich cloth and vinyl or all-vinyl combinations. Counting standard trims and options, you have 19 choices in the new hardtops and convertibles, 15 choices in sedans and 8 choices in wagons. (In some cases a trim is offered with more than one model.) Your Ford Dealer will be happy to show you actual samples of new Fairlane colors and upholsteries.

ENGINES: 120-hp Fairlane Six (std. on all models except GT's and GTA's)—200-cu. in. displ.; 3.68" bore x 3.13" stroke; 9.2 to 1 comp. ratio; 7 main bearings; reg. fuel; single-barrel carb.; auto. choke; self-adj. valves; oil cap'y, incl. filter, 4½ qt.

200-hp Challenger V-8 (opt. on all models except GT's and GTA's)—289-cu. in. displ.; 4.00" bore x 2.87" stroke; 9.3 to 1 comp. ratio; reg. fuel; 2-barrel carb.; auto. choke; self-adj. valves; oil cap'y, incl. filter, 5 qt.

265-hp Thunderbird V-8† (opt. on all models except GT's and GTA's)—390-cu. in. displ.; 4.05" bore x 3.78" stroke; 9.5 to 1 comp. ratio; reg. fuel; 2-barrel carb.; auto. choke; self-adj. valves; oil cap'y, incl. filter, 5 qt. †275 hp with Cruise-O-Matic Drive.

315-hp Thunderbird Special V-8 (opt. on all models except GT's and GTA's)—Same specifications as 265-hp Thunderbird Special V-8, except 10.5 comp. ratio, 4-barrel carburetor, high-lift cam, low-restriction air cleaner. Premium fuel required. Dual exhausts std.

335-hp Thunderbird Special V-8 (standard and available only on GT's and GTA's)—Same basic specifications as 315-hp Thunderbird Special V-8.

ENGINE FEATURES: Fairlane engine economy and durability are results of modern, efficient design, high quality materials, and painstaking manufacture. Other contributing features: 6000-mile (or 6-month) full-flow oil filter; dry element air cleaner; year-round 190° thermostat; 12-volt electrical system; 38-amp. alternator; 54-plate battery; 45 amp-hr; weatherproof ignition with constant resistance wiring; air-cooled breaker points; positive-engagement starter; fully aluminized mufflers (dual mufflers of aluminized and stainless steel).

CLUTCH AND MANUAL TRANSMISSION: Clutch face diameter 9" with Six, 10" with 289 V-8 and 3-speed transmission, 10.4" with 289 V-8 and 4-speed transmission, 11" with 390 V-8. 3-Speed Manual Transmission (std. with Six): synchronizers in 2nd and direct, anti-friction bearings throughout. Standard "H" shift pattern with lever on steering column. Synchro-Smooth Drive Transmission (std. with V-8's): with synchronized manual shifting in all three forward gears. 4-Speed Manual Transmission (opt. with V-8's): fully synchronized forward gears with floor-mounted stick shift. Overdrive (opt. with 200-hp V-8): conventional 3-speed transmission plus automatic 4th gear which cuts in above 28 mph, cuts out below 21 mph (approx.). Downshift to direct by flooring accelerator.

CRUISE-O-MATIC DRIVE: (optional all engines, standard equipment on GTA's)—Simplified design, lightweight, cast-aluminum construction. Torque converter combined with planetary gear set. Console-mounted selector lever (XL's and GT's). Three forward speeds, one reverse. Two selective drive ranges provide a 3-speed range starting in low for all normal driving, or 2-speed range starting in intermediate for more surefooted driving on slippery surface. Effective engine braking in low gear for better control on grades and hilly driving.

Own a trailer? Planning to buy one? Your Ford Dealer can help you equip your new Fairlane for towing any of the popular sizes. The Fairlane optional equipment suggestions listed here can add a great deal to smooth-sailing trailer trips with your Fairlane.

FAIRLANE TRAILER TOWING RECOMMENDATIONS: Class 1 (gross trailer weight up to 2,000 lb.; static tongue load up to 200 lb.)—200-hp V-8; Cruise-O-Matic Drive, extra cooling package, power steering and brakes, HD brake lining, 42-amp. alternator, heavy-duty battery. Class 2 (gross trailer weight 2,000 to 3,500 lb.; static tongue load 200 to 500 lb.)—200-hp, 265-hp or 335-hp V-8's; Cruise-O-Matic Drive; extra cooling package; 7.75 x 14 tires; heavy-duty, riveted brake linings; heavy-duty springs and shock absorbers; power steering and brakes; 42-amp. alternator; heavy-duty battery. For additional information, ask your Ford Dealer for a copy of the "1966 Ford Cars & Trucks for Recreation."

13 FAIRLANE POWER TEAMS

ENGINES	TRANSMISSIONS
Fairlane Six*	A†, C
Challenger V-8	B†, C, D, E
Thunderbird V-8	B†, C, E
Thunderbird Special V-8's	B†, C, E, F

Standard Equipment Key: *All except GT, GTA
†Transmissions (as indicated)

A—3-Speed Manual
B—Synchro-Smooth Drive (fully synchronized 3-speed manual)
C—Cruise-O-Matic Drive D—Overdrive E—4-Speed Manual
F—Sport Shift Cruise-O-Matic (GTA transmission only)

Every 1966 Ford-built car was designed step by step to be a safer, more convenient, economical and enjoyable automobile. Such protective items as front and rear seat belts, padded instrument panel and sun visors, deep-dish steering wheel, Safety-Yoke door latches, turn signals, backup lights, emergency flasher, recessed controls, and many others are standard equipment in every Ford-built car . . . designed into the car for greater safety.

Safety authorities agree: Safe driving means proper use of the automobile and its safety equipment, strict obedience to traffic laws at all times and—most importantly—development of the alert, defensive driving habits that are the motorists' best protection against unsafe conditions on the road.

SPORT SHIFT CRUISE-O-MATIC: (standard and available only on GTA's)—Same basic construction as above with 3-speed automatic driving range plus a low and second gear for manual shifting.

REAR AXLE: Semi-floating type with deep-offset hypoid gears. Straddle-mounted drive pinion with 3 roller bearings (V-8's only). Induction-hardened, forged shafts with permanently lubricated wheel bearings.

FRONT SUSPENSION: Ball-Joint type with coil springs pivot-mounted on upper arms. Angle-Poised for anti-dive control. 36,000-mile (or 3-year) lube intervals. Strut-stabilized lower arms. Shock absorbers have all-weather fluid for better year-round ride control.

REAR SUSPENSION: Asymmetrical design with rear axle located forward of spring center for anti-dive and anti-squat resistance on braking and takeoff. Extra-long, leaf-type springs with wide spring base for more stable, levelized ride. All-weather shock absorber fluid for more uniform ride control.

STEERING: Recirculating-ball type steering gear provides easy handling. Linkage system lubricated for life. Overall steering ratio 29.4 to 1. Turning diameter 42 feet. Improved power steering option has flexible steering shaft coupling to reduce road shock to steering wheel; ratio 20.6 to 1.

BRAKES: Self-adjusting, self-energizing design. Brakes adjust automatically when applied while car is moving backwards. 10-inch composite drums, grooved for extra cooling. Total lining area, sedans—153 sq. in., convertibles and wagons—172 sq. in., 390 V-8 sedans—172 sq. in., 390 V-8 wagons—191 sq. in.

TIRES: Low-profile design, 4-ply rating blackwall tubeless with Tyrex rayon cord. Safety-type rims. Basic size: 6.95 x 14. Optional: 7.75 x 14. Tire sizes are determined in part by special equipment such as air-conditioning. See your Ford Dealer for complete details.

DIMENSIONS AND CAPACITIES: Overall length 197"; height 55" (sedans), 54.3" (hardtops), 53.9" (convertibles); width 74.0"; wheelbase 116"; treads—58" front and rear; fuel 20 gal.; oil 4.5 qt. (Six), 5 qt. (V-8); cooling system (with heater) 9.5 qt. (Six), 15 qt. (V-8).

FAIRLANE "WORTH MORE" FEATURES: In addition to all the new Fairlane features you can read about in this catalog, there are many others which will make the 1966 Fairlane you buy now more rewarding in both driving pleasure and resale value. Just a few of these "Worth More" features include: Safety-Yoke door latches, aluminum scuff plates, seat side shields, parallel-action electric windshield wipers, curved side glass, step-on parking brake, suspended accelerator, brake and clutch pedals, deep-dish design steering wheel with chrome horn ring, reversible keys and "keyless" locking, right-hand ignition, "floating" rearview mirror (hardtops, convertibles), dual sun visors with retention clips, front and rear arm rests, coat hooks, 2-position door checks, counterbalanced hood and rear deck lid, deep-well trunk, 14-inch, low-profile tires and many, many more.

PRICES: Heater-defroster is included as standard equipment on all models. However, heater-defroster may be deleted on car order if desired at an appropriate price reduction. All optional equipment and accessories, illustrated or referred to as options, optional, or available, are at extra cost. For the price of the Fairlane with the equipment you desire, see your Ford Dealer.

*For all models except wagons. Complete specifications and other special wagon information is included in the 1966 Ford Wagons Catalog. Ask your Ford Dealer for a copy.

TWICE-A-YEAR MAINTENANCE: '66 Fairlanes are designed to go 6,000 miles (or 6 months) between oil changes and minor chassis lubrications; 36,000 miles (or 3 years, whichever comes first) between major chassis lubes. Other '66 Fairlane service-savers include 36,000-mile (or 2-year) engine coolant-antifreeze, self-adjusting brakes, long-life Sta-Ful battery, shielded alternator, rust- and corrosion-resistant aluminized muffler and galvanized major underbody parts. The '66 Fairlane needs so little service it's just good sense to see that it gets the best—at your Ford Dealer's. His factory-trained mechanics and special tools add up to the greatest service combination for your Fairlane.

NEW CAR WARRANTY: Fairlane total-car quality makes this warranty possible: Ford Motor Company warrants to owners as follows: That for 24 months or for 24,000 miles, whichever comes first, free replacement, including related labor, will be made by Ford Dealers of any part with a defect in workmanship or material. Tires are not covered by the warranty; appropriate adjustments will be made by tire companies. Owners will remain responsible for normal maintenance services, routine replacement of parts, such as filters, spark plugs, ignition points, wiper blades, brake and clutch linings, and normal deterioration of soft trim and appearance items. The warranty referred to herein is applicable to products sold in the U.S.A. and in certain neighboring areas.

The illustrations and product information contained herein were current at the time this publication was approved for printing. However, in order to continue to offer the finest automotive products available, Ford Motor Company reserves the right to change specifications, designs, models or prices without notice and without liability for such changes.

America's Total Performance Cars

FORD

MUSTANG • FALCON • FAIRLANE • FORD • THUNDERBIRD

PRODUCTS OF

